



# User's Manual

## Princess Fantasy Learning Tablet™



**vtech**®

© Disney

Visit the Disney website at [www.DisneyPrincess.com](http://www.DisneyPrincess.com)

© 2013 VTech

Printed in China

91-009649-004 US

Dear Parent,

At **VTech**®, we know how important the first day of school is for your child. To help prepare preschoolers for this important event, **VTech**® has developed the **Preschool Learning**™ series of interactive toys.

**Preschool Learning**™ features fun characters and inviting school themes that use technology to capture a child's attention and teach important preschool skills like spelling, counting and the alphabet. These vital skills are taught in a way that's both fun and highly engaging to maintain a child's interest. Children will also be introduced to fun school subjects such as art class, music class and even recess! With **Preschool Learning**™, learning is fun from day one!

At **VTech**®, we know that a child has the ability to do great things. That's why all of our electronic learning products are uniquely designed to develop a child's mind and allow them to learn to the best of their ability. We thank you for trusting **VTech**® with the important job of helping your child learn and grow!

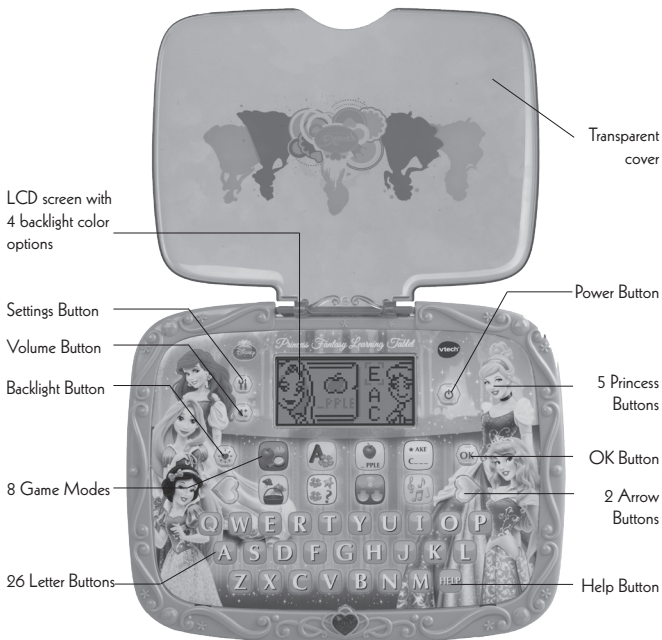
Sincerely,

Your friends at **VTech**®

To learn more about **Preschool Learning**™ series and other **VTech**® toys, visit [www.vtechkids.com](http://www.vtechkids.com)

# INTRODUCTION

Thank you for purchasing the VTech® Princess Fantasy Learning Tablet™. Join Ariel, Snow White, Aurora, Rapunzel and Cinderella on a magical journey full of learning and fun! The Princess Fantasy Learning Tablet™ by VTech® is just the right size for little girls' hands. Eight interesting activities teach language, vocabulary, phonics, music and more. Choose one of the four color options for the backlit screen or press any of the princess buttons to hear responses!



# INCLUDED IN THIS PACKAGE

- One VTech® Princess Fantasy Learning Tablet™
- One transparent cover
- One user's manual

## WARNING:

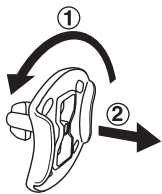
All packing materials, such as tape, plastic sheets, packaging locks and tags are not part of this toy, and should be discarded for your child's safety.

## ATTENTION

Pour la sécurité de votre enfant, débarrassez-vous de tous les produits d'emballage tels que rubans adhésifs, feuilles de plastique, attaches et étiquettes. Ils ne font pas partie du jouet.

**Note:** Please keep this user's manual as it contains important information

Unlock the packaging locks:

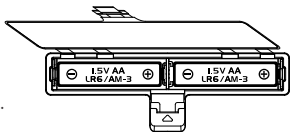


- ① Rotate the packaging lock counter-clockwise for 90 degrees
- ② Pull out the packaging lock

# GETTING STARTED

## BATTERY INSTALLATION

1. Make sure the unit is OFF.
2. Locate the battery cover on the back of the unit.
3. Open the battery cover.
4. Install 2 new "AA" Size (AM-3/LR6) batteries following the diagram inside the battery box. (The use of new alkaline batteries is recommended for maximum performance.)
5. Replace the battery cover.



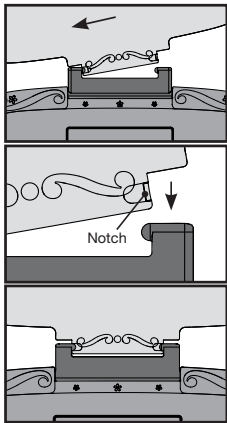
## BATTERY NOTICE

- Use new alkaline batteries for maximum performance.
- Use only batteries of the same or equivalent type as recommended.
- Do not mix different types of batteries: alkaline, standard (carbon-zinc) or rechargeable (Ni-Cd, Ni-MH), or new and used batteries.
- Do not use damaged batteries.
- Insert batteries with the correct polarity.
- Do not short-circuit the battery terminals.
- Remove exhausted batteries from the toy.
- Remove batteries during long periods of non-use.
- Do not dispose of batteries in fire.
- Do not charge non-rechargeable batteries.
- Remove rechargeable batteries from the toy before charging (if removable).
- Rechargeable batteries are only to be charged under adult supervision.

## ASSEMBLY INSTRUCTIONS

The transparent cover is included separately in the package. Follow these instructions to attach it to the **Princess Fantasy Learning Tablet™**.

1. Hold the cover in front of you, with the Disney Princess graphic facing down and the cover's hinge closest to your body.
2. Observe the right-hand side of the cover's hinge. There is a small notch.
3. Insert the left-hand side of the cover's hinge into the left-hand side of the hinge on the tablet.
4. Lower the notched side of the cover's hinge until it is behind the hinge on the tablet.
5. Push the cover forward until it locks into the hinge.



# PRODUCT FEATURES

## 1. ON/OFF BUTTON

Press the **ON/OFF Button** to turn the unit **ON** and press it again to turn the unit **OFF**.

## 2. PRINCESS BUTTONS

Press the 5 Princess Buttons to get to know Ariel, Snow White, Aurora, Rapunzel and Cinderella.

## 3. SETTINGS BUTTON

Press the **Settings Button** to enter the Settings menu to adjust the screen contrast or background music. Choose the Contrast icon to change the contrast. Use the **Left Arrow Button** to lighten the contrast, or use the **Right Arrow Button** to darken the contrast. Press the **OK Button** to confirm your choice. To adjust the background music, choose the background music icon in the setting menu. Use the **Arrow Buttons** to turn the background music up or down, then **OK Button** to confirm your choice.

## 4. VOLUME BUTTON

Press the **Volume Button** to adjust the volume. Use the **Left Arrow Button** to reduce the volume, or use the **Right Arrow Button** to raise the volume. Press the **OK Button** to confirm your choice.

## 5. BACKLIGHT BUTTON

Press the **Backlight Button** to change the backlight color. Choose between blue, red, purple, and pink.

## 6. ACTIVITY BUTTONS

There are 8 activity Buttons. Press a button to enter that activity.



## 7. OK BUTTON

Press the **OK Button** to confirm your choice.

## 8. ARROW BUTTONS

Press the **Arrow Buttons** to make a selection in a menu or activity.

## 9. LETTER BUTTONS

Press the **Letter Buttons** to learn letters or to answer letter-related questions.



## 10. HELP BUTTON

Press this button to repeat the current question or instruction, or to receive a useful hint in some activities.

## 11. AUTOMATIC SHUT-OFF

To preserve battery life, the unit will automatically turn off after several minutes of no input. The unit can be turned on again by pressing the **ON/OFF Button**. The unit will also automatically turn off when the batteries are very low. A warning will be displayed on screen as a reminder to change the batteries.

# ACTIVITIES:

The VTech® Princess Fantasy Learning Tablet™ offers a total of 8 fun activities to play.

### 1: Words & Phonics

Press the **Arrow Button** or **Letter Buttons** to turn the book page. Learn letters, phonics and words with Ariel, Snow White and Aurora!

## 2: Guess the Letter



Help Rapunzel guess which letter is partly covered by a flower. Use the **Arrow Buttons** to move the flower left or right to see different parts of the letter and press **Letter Buttons** to answer.

## 3 Letters Games



Cinderella and Rapunzel need your help! Listen to the questions and press the **Letter Buttons** to answer. There are two types of questions – beginning letters questions and phonics questions.

## 4: Typing Skill



Type the words within the time limit to help the Fairy Godmother finish her magic spell. Press **Letter Buttons** to type in the words.

## 5: Cooking Fun



Snow White is cooking supper for the seven dwarfs. The screen will show a list of ingredients and voice out their names. Remember the required ingredients and then use the **Arrow Buttons** to choose the correct ingredients, then press **OK Button** to confirm your choice.

## 6: Pattern Sequences



Help the fairies to make the cake for Aurora's birthday. A pattern sequence will be shown with one piece or two pieces missing. Use the **Arrow** and **OK Button** to select the missing pattern and complete the sequences to decorate the cake.

## 7: Find the Pearl



Ariel is collecting pearls, but she doesn't know which shell has a pearl inside. On the screen, three shells will be shown with a pearl in one of them. Watch carefully! The shells will open and close quickly and then change positions. Use the **Arrow Buttons** to find the correct shell and then press **OK Button** to confirm your choice.

## 8: Music Time



Let's dance with the princesses! There are 10 melodies to choose from. Use the **Arrow Buttons** to select a melody then press the **OK Button** to hear it. Press the **Letter Buttons** to see some surprises.



# CARE & MAINTENANCE

1. Keep the unit clean by wiping it with a slightly damp cloth.
2. Keep the unit out of direct sunlight and away from any direct heat sources.
3. Remove the batteries when the unit is not in use for an extended period of time.
4. Do not drop the unit on a hard surface and do not expose the unit to excess moisture or water.

# TROUBLESHOOTING

If for some reason the program/activity stops working, then please follow these steps:

1. Turn the unit OFF.
2. Interrupt the power supply by removing the batteries.
3. Let the unit stand for a few minutes, then replace the batteries.
4. Turn the unit back ON. The unit will now be ready to play again.
5. If the unit still does not work, replace with an entire set of new batteries.

If the problem persists, please call our Consumer Services Department at 1-800-521-2010 in the U.S. or 1-877-352-8697 in Canada, and a service representative will be happy to help you.

# TECHNICAL SUPPORT

If you have a problem that cannot be solved by using this manual, we encourage you to visit us online or contact our Consumer Services Department with any problems and/or suggestions that you might have. A support representative will be happy to assist you. Before requesting support, please be ready to provide or include the information below:

- The name of your product or model number (the model number is typically located on the back or bottom of your product).
- The actual problem you are experiencing.
- The actions you took right before the problem started.

**Internet:** [www.vtechkids.com](http://www.vtechkids.com)

**Phone:** 1-800-521-2010 in the U.S. or 1-877-352-8697 in Canada

# IMPORTANT NOTE:

Creating and developing Preschool Learning products is accompanied by a responsibility that we at **VTech®** take very seriously. We make every effort to ensure the accuracy of the information which forms the value of our products. However, errors sometimes can occur. It is important for you to know that we stand behind our products and encourage you to call our Consumer Services Department at 1-800-521-2010 in the U.S., or 1-877-352-8697 in Canada with any problems and/or suggestions that you might have. A service representative will be happy to help you.

**NOTE:** This equipment has been tested and found to comply with the limits for a Class B digital device, pursuant to Part 15 of the FCC Rules. These limits are designed to provide reasonable protection against harmful interference in a residential installation. This equipment generates, uses and can radiate radio frequency energy and, if not installed and used in accordance with the instructions, may cause harmful interference to radio communications. However, there is no guarantee that interference will not occur in a particular installation. If this equipment does cause harmful interference to radio or television reception, which can be determined by turning the equipment off and on, the user is encouraged to try to correct the interference by one or more of the following measures:

- Reorient or relocate the receiving antenna.
- Increase the separation between the equipment and receiver.
- Connect the equipment into an outlet on a circuit different from that to which the receiver is connected.
- Consult the dealer or an experienced radio/TV technician for help.

Caution: changes or modifications not expressly approved by the party responsible for compliance could void the user's authority to operate the equipment.



**CLASS 1  
LED PRODUCT**